

PRODUCT INFORMATION PACKET

marathon[®]
Motors

Model No: 143TTDR16040

Catalog No: GT2501

1 HP Close-Coupled Pump Motor, 3 phase, 1800 RPM, 575 V, 143JP Frame, ODP
JP Motors



Regal and Marathon are trademarks of Regal Beloit Corporation or one of its affiliated companies.
©2021 Regal Beloit Corporation, All Rights Reserved. MC017097E

REGAL

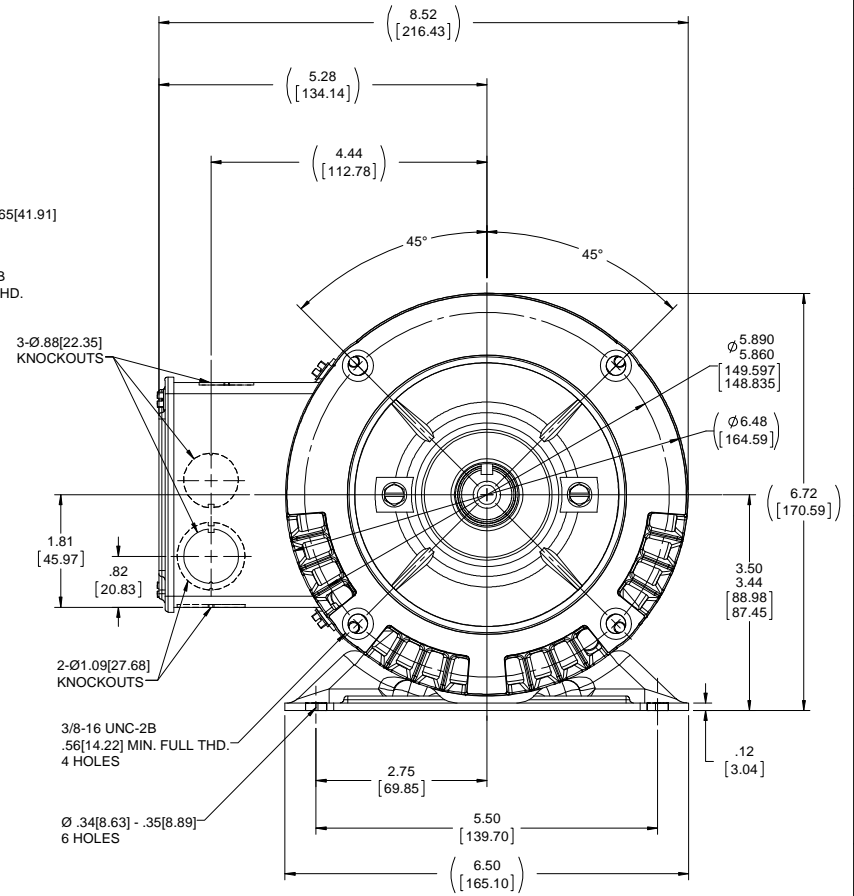
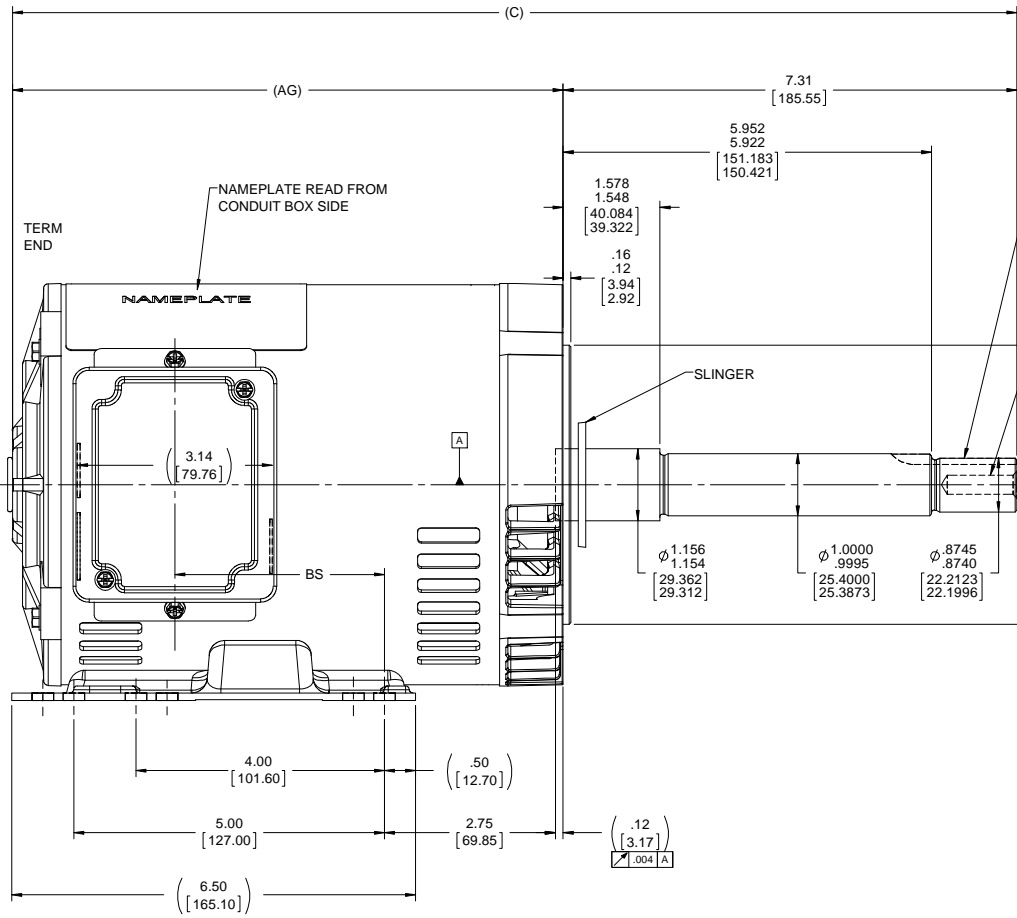
Nameplate Specifications

Output HP	1 Hp	Output KW	0.75 kW
Frequency	60 Hz	Voltage	575 V
Current	1.2 A	Speed	1760 rpm
Service Factor	1.15	Phase	3
Efficiency	85.5 %	Power Factor	71
Duty	Continuous	Insulation Class	F
Design Code	B	KVA Code	N
Frame	143JP	Enclosure	Drip Proof
Thermal Protection	No	Ambient Temperature	40 °C
Drive End Bearing Size	6206	Opp Drive End Bearing Size	6203
UL	Recognized	CSA	Y
CE	Y	IP Code	22

Technical Specifications

Electrical Type	Squirrel Cage Inverter Rated	Starting Method	Line Or Inverter
Poles	4	Rotation	Reversible
Resistance Main	13.6 Ohms	Mounting	Rigid Base
Motor Orientation	Horizontal	Drive End Bearing	Ball
Opp Drive End Bearing	Ball	Frame Material	Rolled Steel
Shaft Type	JP	Overall Length	18.18 in
Frame Length	9.06 in	Shaft Diameter	0.875 in
Shaft Extension	7.31 in	Assembly/Box Mounting	F1 ONLY
Connection Drawing	A-EE7300	Outline Drawing	A-100132-906

This is an uncontrolled document once printed or downloaded and is subject to change without notice. Date Created:20/01/2021



DASH NO.	"C"	"AG"	"BS"
706	16.17[410.71]	8.87[225.29]	3.37[85.59]
756	16.67[423.41]	9.37[237.99]	3.87[98.29]
806	17.17[436.11]	9.87[250.69]	4.37[110.99]
856	17.67[448.81]	10.37[263.39]	4.87[123.69]
906	18.17[461.51]	10.87[276.09]	5.37[136.39]

NOTES:
CONDUIT BOX CAN BE ROTATED IN 180° STEPS.

DRAWING REVISION ECO-0143026	REVISION BY A. KEETHA	DATE 12/29/2017	TOLERANCES UNLESS OTHERWISE SPECIFIED: FRACTIONS: .001, .002, .003, .005, .010, .015, .020, .030, .040, .050, .060, .070, .080, .090, .100, .125, .150, .175, .200, .250, .300, .375, .450, .500, .625, .750, .875, 1.000, 1.250, 1.500, 2.000, 2.500, 3.000, 3.750, 4.500, 5.000, 6.000, 7.000, 8.000, 9.000, 10.000, 12.000, 15.000, 20.000, 25.000, 30.000, 35.000, 40.000, 45.000, 50.000, 60.000, 70.000, 80.000, 90.000, 100.000, 125.000, 150.000, 175.000, 200.000, 250.000, 300.000, 350.000, 400.000, 450.000, 500.000, 600.000, 700.000, 800.000, 900.000, 1000.000 DECIMALS: .001, .002, .003, .005, .010, .015, .020, .030, .040, .050, .060, .070, .080, .090, .100, .125, .150, .175, .200, .250, .300, .375, .450, .500, .625, .750, .875, 1.000, 1.250, 1.500, 2.000, 2.500, 3.000, 3.750, 4.500, 5.000, 6.000, 7.000, 8.000, 9.000, 10.000, 12.000, 15.000, 20.000, 25.000, 30.000, 35.000, 40.000, 45.000, 50.000, 60.000, 70.000, 80.000, 90.000, 100.000, 125.000, 150.000, 175.000, 200.000, 250.000, 300.000, 350.000, 400.000, 450.000, 500.000, 600.000, 700.000, 800.000, 900.000, 1000.000 ANGLES: 30°, 45°, 60°, 90°, 120°, 150°, 180°	DRAWN BY BRH	DATE 11/02/1995	APPROVED BY GK	DESCRIPTION 140 FR. 88-DR-PR-.38-C FACE-3P EXT.
OUTLINE CONVERSION PROJECT			DATE 11/02/1995	MATERIAL 140 FR. 88-DR-PR-.38-C FACE-3P EXT.		PROCESS/FINISH	
THIRD ANGLE PROJECTION			SIZE D	DRAWING NUMBER 100132	SHEET 1 OF 1		

**THREE PHASE - SINGLE VOLTAGE
MOTOR - CONDUIT BOX @ 'A'**

**TO REVERSE ROTATION:
INTERCHANGE ANY TWO
LINE LEAD CONNECTIONS.**

TERMINAL BLOCK WHEN SPECIFIED



VIEW OF TERMINAL END

**IF MOTOR HAS
6 LEADS**



A-9806 DECAL

**OPTIONAL CORD
CONNECTION**



DRAWING REVISION AB	REVISION BY JJB	DATE 06-27-2017
ECO ECO-0125361	APPROVED BY TB	DATE 06-27-2017
ECO DESCRIPTION UPDATED TO CURRENT STANDARDS		
<small>COPYRIGHT REGAL BELOIT AMERICA, INC. ALL RIGHTS RESERVED. PROPRIETARY AND CONFIDENTIAL INFORMATION - THIS DOCUMENT IS THE PROPERTY OF REGAL BELOIT AMERICA, INC. ("OWNER") AND CONTAINS OWNER'S PROPRIETARY INFORMATION. ANY PERSON, CORPORATION OR OTHER FIRM RECEIVING IT IS DEEMED, BY RECEIVING IT, TO AGREE THAT IT, AND/OR ANY PART OF IT, SHALL NOT BE DISCLOSED TO ANY PERSON, CORPORATION OR OTHER ENTITY, DUPLICATED, AND/OR USED, EXCEPT AS EXPRESSLY APPROVED IN WRITING IN ADVANCE BY OWNER. THIS DOCUMENT SHALL BE RETURNED TO OWNER UPON REQUEST. IT MAY BE SUBJECT TO CERTAIN RESTRICTIONS UNDER APPLICABLE EXPORT CONTROL LAWS AND REGULATIONS.</small>		



DRAWN BY DA
DATE 03-26-1993
APPROVED BY TB
DATE 03-26-1993
REFERENCE
THIRD ANGLE PROJECTION

Regal Beloit America, Inc.	
DESCRIPTION CONNECTION DIAGRAM EXTERNAL - SINGLE VOLTAGE - 3Ø MOTOR	
MATERIAL	PROCESS/FINISH
SIZE A	DRAWING NUMBER EE7300
SHEET 1 OF 1	

Data Sheet

Date: 16-06-2017
 Customer: _____
 Attention: _____
 Submitted by: FAREEDA DUDEKULA



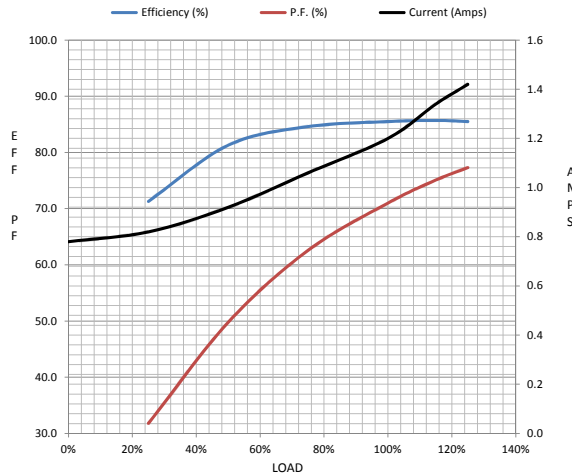
143TTDR16040

Submittal

Data @ 575 V

Motor Load Data									
Load	0%	25%	50%	75%	100%	115%	125%	LR	
Current (Amps)	0.78	0.82	0.92	1.06	1.20	1.34	1.42	11.6	
Torque (ft-lb)	0.00	0.73	1.47	2.22	3.0	3.4	3.7	11.2	
RPM	1800	1790	1781	1772	1760	1,755	1751	0	
Efficiency (%)		71.3	81.3	84.6	85.5	85.7	85.5		
P.F. (%)	11.1	31.8	49.8	62.6	71.0	75.1	77.3	73.4	

Motor Speed Data						Information Block	
	LR	Pull-Up	BD	Rated	Idle		
Speed (RPM)	0	120	1285	1760	1800	HP	1.0
Current (Amps)	11.6	10.4	7.8	1.20	0.78	Sync. RPM	1800
Torque (ft-lb)	11.2	10.0	15.4	3.0	0.00	Frame	143
						Enclosure	DP
						Construction	TDR
						Voltage	575 V
						Frequency	60 Hz
						Design	A
						LR Code letter	N
						Service Factor	1.15
						Temp Rise @ FL	21 ° C
						Duty	CONT
						Ambient	40 ° C
						Elevation	1,000 feet
						Rotor/Shaft wk ²	0.12 Lb-Ft ²
						Ref Wdg	ZT4259 NONE
						Sound Pressure @ 1M	56 dBA
						VFD Rating	CONSTANT 2:1
						Outline Dwg	A-100132-906
						Conn. Diag	A-EE7300



EQUIV CKT (OHMS / PHASE)				
R1	R2	X1	X2	Xm
0.0000	0.0000	0.0000	0.0000	0.0000

